

# Epoque / Tango

Quality and classic design united



WOOD





# Let your heart decide

Manufacturing wooden floors is about managing nature's own design in the best way, since wood has such fantastic characteristics with natural beauty and variation. Whether you are looking for a calm, lively, dark, light, shiny or matt wooden floor, you will find we have it. And remember, each wooden floor is unique.





Epoque Oak Sandy Grey Plank 162 mm



Epoque Oak Black Brushed Plank 162 mm

# Epoque

Do you long for a tasteful and genuine wooden floor in a plank design? Epoque from Tarkett makes your dream come true. Because the Epoque collection features the most exclusive designs in plank flooring. Epoque is 14 mm thick and comes in three different plank widths. You can re-sand it 4 to 5 times. All wooden floors have bevelled edges for a more exclusive feel.

Epoque opens up the opportunity for a whole new set of exclusive solutions for design and interior decoration. Epoque is a floor with exciting colour tones and retains the natural and warm feel that characterises a wooden floor.

With Epoque you can also have a classic dark wooden floor as a pleasant contrast to the light and airy environment that is often found in modern homes. Using heat treatment, familiar wood species are given a new and exciting look. The floor becomes dark and exotic and thus provides an alternative to tropical wood species. You get the unique feel of a brushed floor with Epoque. The range also includes stained versions which highlight the beautiful grain and structure.



Epoque Oak Grey Contrast Plank 162 mm



Epoque Oak Winter Plank 162 mm

## Our floors are pro-environment

As one of the world's leading floor manufacturers we have a big responsibility for the environment. And this is true for the whole chain, from wood species to production and into your home. Our raw material is renewable, we work with chemicals that are completely solvent-free and our wooden floors are fully recyclable.

In order to safeguard and guarantee our environmental policy, we have certified our production. ISO 9001, which guarantees the quality of production, forms the basis of our certification. But we are also environmentally certified in accordance with the ISO 14001 standard and also hold FSC certification. We maintain that environmental awareness is given high priority by Tarkett.



Epoque Beech Steamed Plank 162 mm





# Tango

Tango has the same unique characteristics as Epoque. The design is classic, exclusive plank.

The floors are 13 mm thick with a wear layer of 2.5 mm, which enables you to re-sand the floor 2 - 3 times. Tango, too, has bevelled edges.

# A table showing our selection of floors

Measurements: thickness x length x width

## Epoque

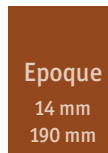
	Lacquer T-lock Minibevel	Natura T-lock Maxibevel
<b>Plank, 14 × 2000–2520 × 190 mm. Bevel lengthwise</b>		
Oak	•	•
Oak Antique	•	
Oak Antique Brushed		•
Oak Antique White Brushed		•
	Lacquer T-lock Minibevel	Natura T-lock Maxibevel
<b>Plank, 14 × 2000–2520 × 162 mm. Bevel lengthwise</b>		
Oak Eu	•	•
Oak Eu Rustical Brushed		•
Oak Black Brushed		•
Oak Java Gold Brushed		•
Oak Am	•	•
Oak Am Antique Brushed		•°
Oak Am Antique White Brushed		•
Oak Misty Grey		•
Oak Sandy Grey		•
Oak Winter		•
Oak Country	•	
Oak Cumin		•
Oak Design Grey Contrast	•	
Ash White		•
Ash Robust White		•
Ash Cognac	•	
Ash Cognac Brushed		•
Maple Canadian	•	
Maple Canadian Robust	•	
Beech Steamed	•	•
Merbau	•	
African Mahogany	•	
Jatoba	•	° Unfinished

	Lacquer T-lock	Natura T-lock
<b>Miniplank, 14 × 1075-1245 × 117 mm. Minibevel lengthwise</b>		
Oak Select	•	
Oak Nature	•	•
Oak Brushed	•	
Oak Rustical Brushed	•	•
Oak White		•
Oak Java Gold Brushed		•
Ash Cognac	•	
Ash Cognac Brushed		•
Maple Eu	•	
Beech Steamed	•	
Merbau	•	•
Jatoba	•	

	Lacquer T-lock	Natura T-lock
<b>2-strip, 14 × 2520 × 200 mm</b>		
Oak Nature	•	•
Oak Rustical Brushed	•	•
Oak Java Brushed		•
Ash Cognac Brushed		•
Ash White		•
Merbau	•	

## Tango

	Natura T-lock 162 mm	Natura T-lock 190 mm
<b>Plank, 13 × 2000–2520 × 162/190 mm. Minibevel lengthwise</b>		
Oak Nature	•	•
Oak Antique Brushed		•
Oak Antique White Brushed	•	



**Oak Plank**  
781 70 03 781 70 14\*



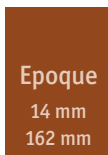
**Oak Antique Plank**  
785 60 04



**Oak Antique Brushed Plank**  
785 60 06\*



**Oak Antique White Brushed Plank**  
781 60 04\*



**Oak Eu Plank**  
781 30 01 781 30 04\*



**Oak Eu Rustical Brushed Plank**  
781 40 01\*



**Oak Black Brushed Plank**  
781 60 06\*



**Oak Java Gold Brushed Plank**  
788 00 05\*



**Oak Am Plank**  
781 50 12 781 50 03\*



**Oak Am Antique Brushed Plank**  
785 50 06\* 785 50 07°



**Oak Am Antique Brushed White Plank**  
781 60 01\*



**Oak Misty Grey Plank**  
785 80 03\*



**Oak Sandy Grey Plank**  
785 80 02\*



**Oak Winter Plank**  
785 80 01\*



**Oak Country Plank**  
785 80 04



**Oak Cumin Plank**  
781 60 07\*



**Oak Design Grey Contrast**  
785 80 06



**Ash White Plank**  
794 80 01\*

\* treated with *Proteco Natura*  
° unfinished



**Ash Robust White Plank**  
794 80 03\*



**Ash Cognac Plank**  
797 60 02



**Ash Cognac Brushed Plank**  
797 60 03\*



**Maple Canadian Plank**  
850 40 02



**Maple Canadian Robust Plank**  
850 40 08



**Beech Steamed Plank**  
790 60 01 790 60 03\*



**Merbau Plank**  
860 20 01



**African Mahogany Plank**  
862 20 01



**Jatoba Plank**  
863 70 03



**Oak Select Plank**  
782 20 01



**Oak Nature Plank**  
782 00 01 782 00 08\*



**Oak Brushed Plank**  
782 00 03



**Oak Rustical Brushed Plank**  
782 10 01 782 10 05\*



**Oak White Plank**  
782 30 01\*



**Oak Java Gold Brushed Plank**  
788 10 05\*



**Ash Cognac Plank**  
797 70 01



**Ash Cognac Brushed Plank**  
797 70 05\*



**Maple Eu Plank**  
852 50 01



**Beech Steamed Plank**  
790 70 01



**Merbau Plank**  
860 40 01 860 40 04\*



**Jatoba Plank**  
863 80 01



**Oak Nature 2-strip**  
781 80 05 781 80 08\*



**Oak Rustical Brushed 2-strip**  
781 90 07 781 90 06\*



**Oak Java Brushed 2-strip**  
788 20 03\*



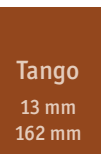
**Ash Cognac Brushed 2-strip**  
797 80 01\*



**Ash White 2-strip**  
795 90 02\*



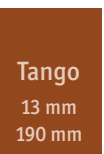
**Merbau 2-strip**  
860 30 04



**Oak Nature Plank**  
784 90 03\*



**Oak Antique White Brushed Plank**  
785 00 03\*



**Oak Nature Plank**  
785 10 03\*



**Oak Antique Brushed Plank**  
785 20 03\*

The pictures show a small part of the floors and may differ in structure, colour and lustre compared with the actual floors. Some of these may not be available in all countries.





## Optimum protection with Proteco

Tarkett not only manufacture one of the world's best wooden floors. We also provide our floors with one of the world's best protections against wear and tear and micro scratches. The floor surface has a lot to do with feel and shine and this is where Proteco come into its own.

Proteco Lacquer is a double-hardened clear varnish and gives you a strong wooden floor that retains its feel of real wood.

Proteco Natura is a double-hardened matt varnish that retains the natural colour and feel of the wood, just like an oiled floor. You can be secure in the knowledge that Proteco – apart from being very hard-wearing and offering effective protection – is also kind on the environment.



Epoque/Tango	0	1	2	3	4	5	6	7
Jatoba								
Merbau								
Maple Canadian								
Doussié								
Ash								
Beech								
Oak								
Ash Cognac								
African Mahogany								
Oak Java								
Walnut								

The Brinell test is a simple way of measuring the hardness of the wood.

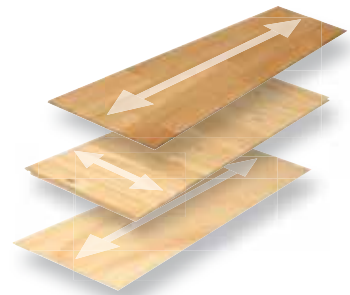
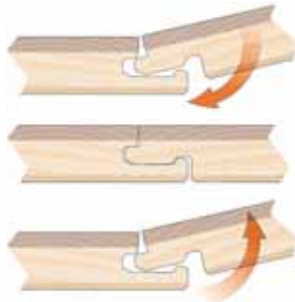
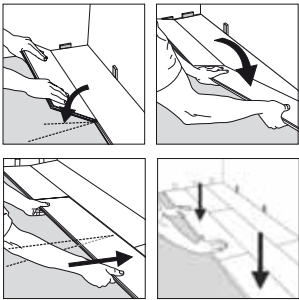
## Quality even deep down

Wood is a living material that strives to maintain the same relative humidity as the ambient air. Wood swells with high humidity and shrinks when humidity is low. Our patented three-layer construction reduces wood movement by 70%. All Tarkett wooden floors are based on this principle, where the direction of the fibres in the various layers locks the natural movement of the wood. Yet another reason why you should choose a wooden floor from Tarkett.

## Lay your floor without glue

It couldn't be simpler. A smart solution from Tarkett makes it easy to install your new wooden floor without glue: T-lock.

The system locks the boards closely together without edges and unevenness.



## TARKETT SALES COMPANIES

**Australia**, 16 Anella Avenue, Castle Hill  
Tel: +61 2 9634 7373  
**Austria**, Frankenthal, Germany  
Tel.: +43 (0) 800 9300-05, Fax.: +43 (0) 800 9300-06  
**Baltics**, Kaunas  
Tel: +370 611 18292 Fax: +370 37263938  
**Belgium**, Brussels & Luxemburg  
Tel: +32 2 520 04 67, Fax: +32 2 520 05 88  
**Canada**, Farnham  
Tel: +1 450 293 3173 Fax: +1 450 293 3835  
**Czech and Slovak Republic**, Prague  
Tel: +420 271 001 600,  
Fax: +420 271 001 609  
**Denmark**, Greve  
Tel: +45 43 90 60 11, Fax: +45 43 90 37 00  
**Finland**, Espoo,  
Lars Sonckin kaari 16, 02600 Espoo  
Tel: +358 (0)9 4257 9000, Fax: +358 (0)9 4257 9090

**France**, Templemars  
Tel: +33 3 28 55 54 44,  
Fax: +33 3 28 55 54 73  
**Germany**, Frankenthal  
Tel: +49 6233 81 0, Fax: +49 6233 81 12 86  
**Great Britain**, Lenham, Maidstone  
Tel: +44 (0)1622 854 151,  
Fax: +44 (0)1622 854 127  
**Hong Kong**, Wanchai  
Tel: +852 2511 8716, Fax: +852 2507 5517  
**Hungary**, Budapest  
Tel: +36 1437 8150  
**Italy**, Milan  
Tel: +39 02 893411, Fax: +39 02 89305704  
**Netherlands**, Breda  
Tel: +31 (0) 76 5780750,  
Fax: +31 (0) 76 5780778  
**Middle East Europe**, Beirut  
Tel: +9611513363/4, Fax: +9611513365

**Norway**, Drammen  
Pb. 500-Brakerøya, 3002,  
info.norway@tarkett.com  
Tel: +47 32209200, Fax: +47 32209201  
**Poland**, Warsaw  
Tarkett CEE  
Tel: +48 22 639 31 66, Fax: +48 22 639 31 70  
**Portugal**, Lisboa  
Tel: +351 21 427 64 31,  
Fax: +351 21 427 64 49  
**Russia**, Moscow  
Fax: +7 095 795 33 90  
**Serbia and Montenegro**, Backa Palanka  
Tel: +381 (0)21 7557 649,  
Fax: +381 (0)21 7557 637  
**Singapore**, Singapore  
Tel: +65 6743 53 84, Fax: +65 628 49 336  
**Spain**, Madrid  
Tel: +34 914951400, Fax: +34 913580619

**South East Europe**, Athens  
Tel: +30 210 5763889, +30 210 5765434,  
Fax: +30 210 5765160  
**Sweden**, Sollentuna  
Tel: +46 (0)771 25 19 00,  
Fax: +46 (0)8 96 62 83  
**Switzerland**, Frankenthal, Germany  
Tel: +41 (0)43 233 79 30,  
Fax: +41 (0)43 233 79 31  
**Ukraine**, Kiev  
Tel: +380 (44) 569 12 21,  
Fax: +380 (44) 569 12 18  
**International/Germany**, Frankenthal  
Tel: +49 6233 810, Fax: +49 6233 81 16 20  
**International/France**, Nanterre  
Tel: +33 1 41 20 41 01  
**Production Unit/Sweden**, Hanaskog  
Tel: +46 44 26 80 00, Fax: +46 44 638 90



[www.tarkett.com](http://www.tarkett.com)